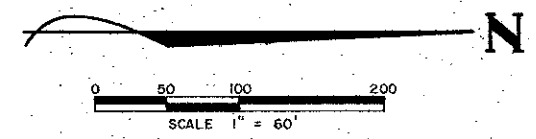


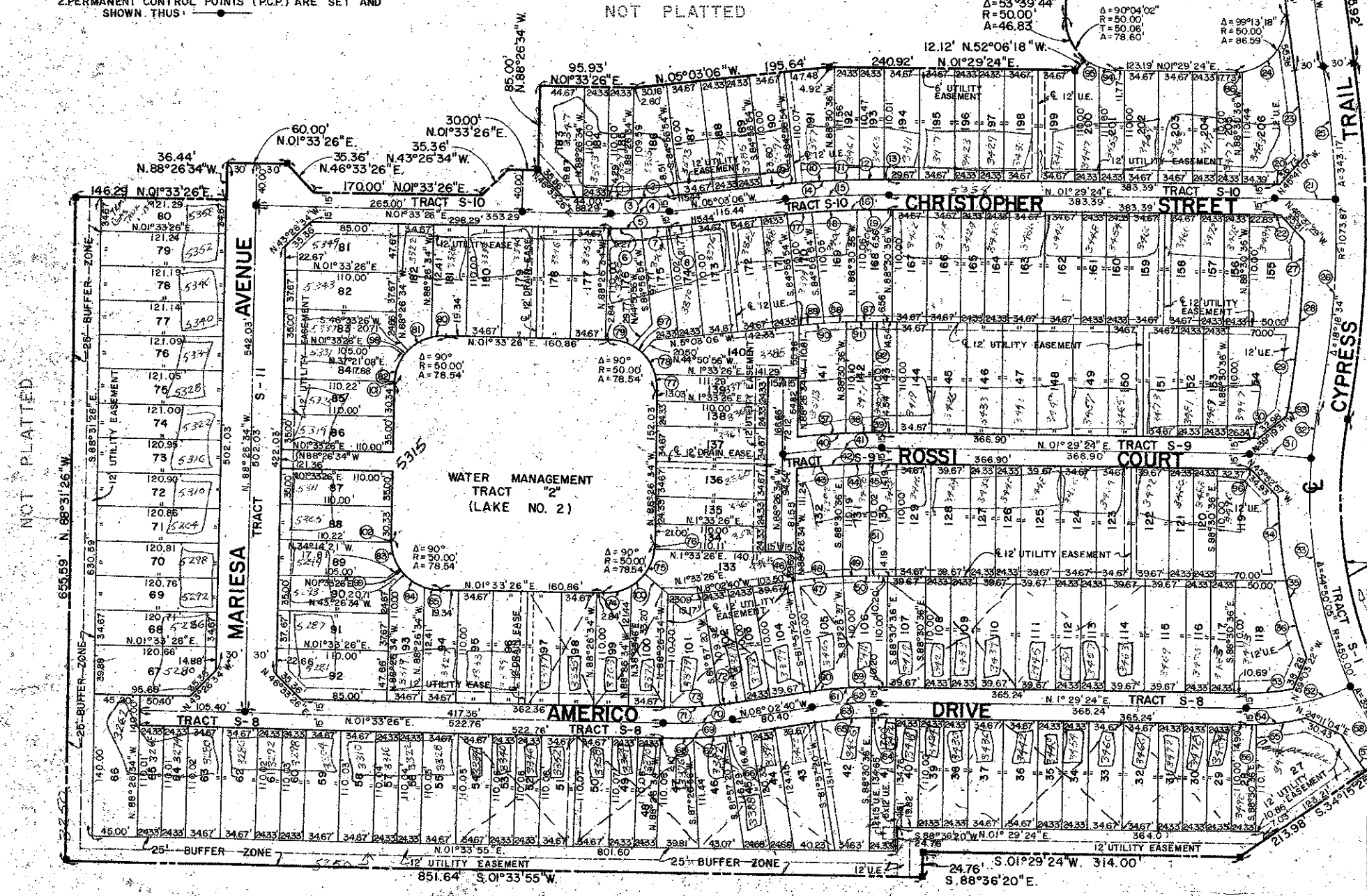
A PLANNED UNIT DEVELOPMENT IN CYPRESS LAKES
CYPRESS LAKES-PLAT NO. 3-A
 SECTION 14, TOWNSHIP 43 SOUTH, RANGE 42 EAST
 PALM BEACH COUNTY, FLORIDA
 IN 4 SHEETS SHEET NO. 3



CURVE DATA CHART CONTINUED

CURVE NO.	Δ	RADIUS	ARC
97	11°27'33"	50.00'	10.00'
98	9°11'25"	50.00'	8.02'
99	9°10'44"	50.00'	8.01'
100	13°31'20"	50.00'	11.80'
101	5°19'29"	50.00'	4.66'
102	5°20'09"	50.00'	4.67'

SURVEYOR'S NOTE:
 1. PERMANENT REFERENCE MONUMENTS (P.R.M.) ARE SET AND SHOWN THIS: [Symbol]
 2. PERMANENT CONTROL POINTS (P.C.P.) ARE SET AND SHOWN THIS: [Symbol]



CURVE DATA CHART CONTINUED

CURVE NO.	Δ	RADIUS	ARC
60	0°08'17"	118.00'	19.43'
61	0°08'30"	118.00'	19.43'
62	0°08'30"	118.00'	19.43'
63	0°08'30"	118.00'	19.43'
64	0°08'30"	118.00'	19.43'
65	0°08'30"	118.00'	19.43'
66	0°08'30"	118.00'	19.43'
67	0°08'30"	118.00'	19.43'
68	0°08'30"	118.00'	19.43'
69	0°08'30"	118.00'	19.43'
70	0°08'30"	118.00'	19.43'
71	0°08'30"	118.00'	19.43'
72	0°08'30"	118.00'	19.43'
73	0°08'30"	118.00'	19.43'
74	0°08'30"	118.00'	19.43'
75	0°08'30"	118.00'	19.43'
76	0°08'30"	118.00'	19.43'
77	0°08'30"	118.00'	19.43'
78	0°08'30"	118.00'	19.43'
79	0°08'30"	118.00'	19.43'
80	0°08'30"	118.00'	19.43'
81	0°08'30"	118.00'	19.43'
82	0°08'30"	118.00'	19.43'
83	0°08'30"	118.00'	19.43'
84	0°08'30"	118.00'	19.43'
85	0°08'30"	118.00'	19.43'
86	0°08'30"	118.00'	19.43'
87	0°08'30"	118.00'	19.43'
88	0°08'30"	118.00'	19.43'
89	0°08'30"	118.00'	19.43'
90	0°08'30"	118.00'	19.43'
91	0°08'30"	118.00'	19.43'
92	0°08'30"	118.00'	19.43'
93	0°08'30"	118.00'	19.43'
94	0°08'30"	118.00'	19.43'
95	0°08'30"	118.00'	19.43'
96	0°08'30"	118.00'	19.43'

CURVE DATA CHART

CURVE NO.	Δ	RADIUS	ARC
1	0°22'05"	485.00'	30.05'
2	0°14'27"	485.00'	35.51'
3	0°08'32"	485.00'	28.96'
4	0°08'32"	500.00'	28.67'
5	0°08'32"	515.00'	28.40'
6	0°08'32"	515.00'	28.40'
7	0°08'32"	515.00'	28.40'
8	0°08'32"	515.00'	28.40'
9	0°08'32"	515.00'	28.40'
10	0°08'32"	515.00'	28.40'
11	0°08'32"	515.00'	28.40'
12	0°08'32"	515.00'	28.40'
13	0°08'32"	515.00'	28.40'
14	0°08'32"	515.00'	28.40'
15	0°08'32"	515.00'	28.40'
16	0°08'32"	515.00'	28.40'
17	0°08'32"	515.00'	28.40'
18	0°08'32"	515.00'	28.40'
19	0°08'32"	515.00'	28.40'
20	0°08'32"	515.00'	28.40'
21	0°08'32"	515.00'	28.40'
22	0°08'32"	515.00'	28.40'
23	0°08'32"	515.00'	28.40'
24	0°08'32"	515.00'	28.40'
25	0°08'32"	515.00'	28.40'
26	0°08'32"	515.00'	28.40'
27	0°08'32"	515.00'	28.40'
28	0°08'32"	515.00'	28.40'
29	0°08'32"	515.00'	28.40'
30	0°08'32"	515.00'	28.40'
31	0°08'32"	515.00'	28.40'
32	0°08'32"	515.00'	28.40'
33	0°08'32"	515.00'	28.40'
34	0°08'32"	515.00'	28.40'
35	0°08'32"	515.00'	28.40'
36	0°08'32"	515.00'	28.40'
37	0°08'32"	515.00'	28.40'
38	0°08'32"	515.00'	28.40'
39	0°08'32"	515.00'	28.40'
40	0°08'32"	515.00'	28.40'
41	0°08'32"	515.00'	28.40'
42	0°08'32"	515.00'	28.40'
43	0°08'32"	515.00'	28.40'
44	0°08'32"	515.00'	28.40'
45	0°08'32"	515.00'	28.40'
46	0°08'32"	515.00'	28.40'
47	0°08'32"	515.00'	28.40'
48	0°08'32"	515.00'	28.40'
49	0°08'32"	515.00'	28.40'
50	0°08'32"	515.00'	28.40'
51	0°08'32"	515.00'	28.40'
52	0°08'32"	515.00'	28.40'
53	0°08'32"	515.00'	28.40'
54	0°08'32"	515.00'	28.40'
55	0°08'32"	515.00'	28.40'
56	0°08'32"	515.00'	28.40'
57	0°08'32"	515.00'	28.40'
58	0°08'32"	515.00'	28.40'
59	0°08'32"	515.00'	28.40'

Δ = 18°18'34"
 R = 1103.87'
 T = 177.89'
 C = 351.25'
 A = 352.75'

Δ = 44°50'05"
 R = 420.00'
 T = 173.26'
 C = 320.34'
 A = 328.66'

ROSSI AND MALAVASI
 ENGINEERS, INC.
 WEST PALM BEACH
 FLORIDA

CYPRESS LAKES PLAT NO. 3-A
 IN 4 SHEETS SHEET NO. 3

Date: MARCH 13, 1975
 Drawn: R. ANDERSON
 Checked: J. STEVENSON

157

0234-303

Cypress Lakes Plat No. 3-A

157